

Anti-Phospho-MYPT1 (Thr696) Rabbit pAb

Purified Rabbit Polyclonal Antibody

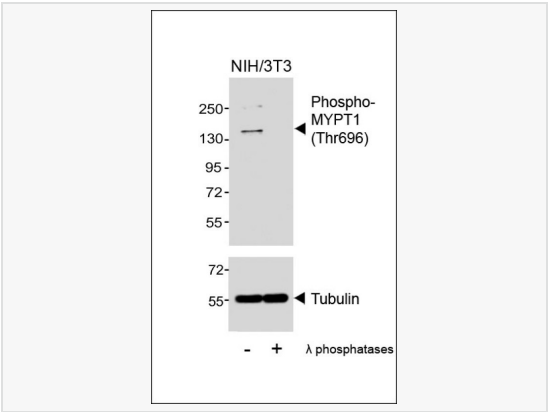
Catalog # P059375

Product Information

Application	WB, ELISA
Reactivity	Human, Mouse
Predicted	Chicken, Mouse, Rat
Dilution	WB 1:500
Host	Rabbit
Clonality	polyclonal
Isotype	IgG
Label	Unconjugated
Immunogen	This Phospho-MYPT1 (Thr696) antibody is generated from a rabbit immunized with a KLH conjugated synthetic peptide between 669-702 amino acids from human MYPT1.
Format	Purified polyclonal antibody supplied in PBS with 0.09% (W/V) sodium azide. This antibody is purified through a protein A column, followed by peptide affinity purification.
Storage	Shipped on wet ice. Store at 20°C. Stable for 24 months from date of receipt. Aliquoting is unnecessary for -20°C storage.
Precautions	Anti-Phospho-MYPT1 (Thr696) antibody is for research use only and not for use in diagnostic or therapeutic procedures.

Protein Information

Synonyms	Protein phosphatase 1 regulatory subunit 12A, Myosin phosphatase-targeting subunit 1, Myosin phosphatase target subunit 1, Protein phosphatase myosin-binding subunit, PPP1R12A, MBS, MYPT1.
Calculated MW	115 kDa
Primary Accession	O14974
Other Accession	Q90623; Q6DRG7; Q9DBR7; Q10728
Gene ID	4659
Background	Key regulator of protein phosphatase 1C (PPP1C). Mediates binding to myosin. As part of the PPP1C complex, involved in dephosphorylation of PLK1. Capable of inhibiting HIF1AN- dependent suppression of HIF1A activity.
Cellular Location	Cytoplasm. Cytoplasm, cytoskeleton, stress fiber. Note=Also along actomyosin filaments.
Tissue Location	Expressed in striated muscles, specifically in type 2a fibers (at protein level).



Western blot analysis of lysates from NIH/3T3 cell line, untreated or treated with λ phosphatases, 30min, using Phospho-MYPT1 (Thr696) Antibody (upper) or Tubulin (lower) .