

Anti-DUSP8 Rabbit pAb

Purified Rabbit Polyclonal Antibody

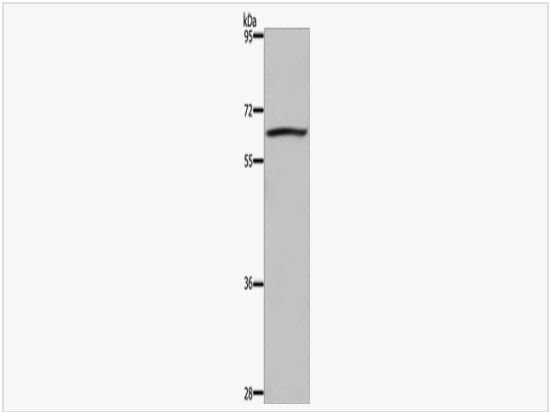
Catalog # P012660

Product Information

Application	WB, ELISA
Reactivity	Human, Mouse
Dilution	WB 1:1,000~1:2,000
Host	Rabbit
Clonality	Polyclonal
Isotype	IgG
Label	Unconjugated
Immunogen	Synthetic peptide of human DUSP8
Format	Buffer System: PBS containing 50% glycerol, 0.5% BSA and 0.02% sodium azide. Purification: Affinity Purified.
Storage	Shipped on wet ice. Store at 20°C. Stable for 24 months from date of receipt. Aliquoting is unnecessary for -20°C storage.
Precautions	Anti-DUSP8 antibody is for research use only and not for use in diagnostic or therapeutic procedures.

Protein Information

Synonyms	dual specificity phosphatase 8, HB5, HVH8, HVH-5, C11orf81.
Calculated MW	Calculated MW: 66 kDa; Observed MW: 66 kDa
Primary Accession	Q13202
Gene ID	1850
Background	Has phosphatase activity with synthetic phosphatase substrates and negatively regulates mitogen-activated protein kinase activity, presumably by catalysing their dephosphorylation.



Western blot analysis of DUSP8 in 293T lysates using DUSP8 antibody.