

Anti-FBLN2 Rabbit pAb

Purified Rabbit Polyclonal Antibody

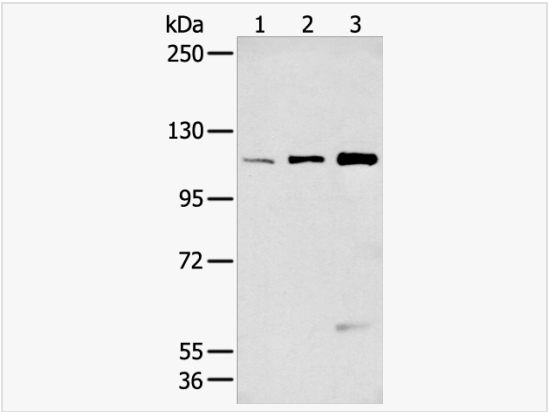
Catalog # P013267

Product Information

Application	WB, ELISA
Reactivity	Human, Mouse
Dilution	WB 1:500~1:2,000
Host	Rabbit
Clonality	Polyclonal
Isotype	IgG
Label	Unconjugated
Immunogen	Synthetic peptide of human FBLN2
Format	Buffer System: PBS containing 50% glycerol, 0.5% BSA and 0.02% sodium azide. Purification: Affinity Purified.
Storage	Shipped on wet ice. Store at 20°C. Stable for 24 months from date of receipt. Aliquoting is unnecessary for -20°C storage.
Precautions	Anti-FBLN2 antibody is for research use only and not for use in diagnostic or therapeutic procedures.

Protein Information

Synonyms	fibulin 2.
Calculated MW	Calculated MW: 127 kDa; Observed MW: 127 kDa
Primary Accession	P98095
Gene ID	2199
Background	FBLN2: fibulin 2. This gene encodes an extracellular matrix protein, which belongs to the fibulin family. This protein binds various extracellular ligands and calcium. It may play a role during organ development, in particular, during the differentiation of heart, skeletal and neuronal structures. Alternatively spliced transcript variants encoding different isoforms have been identified.



Western blot analysis of FBLN2 in HeLa, A549 and 293T lysates using FBLN2 antibody.