

Anti-MKLP1 Rabbit pAb

Purified Rabbit Polyclonal Antibody

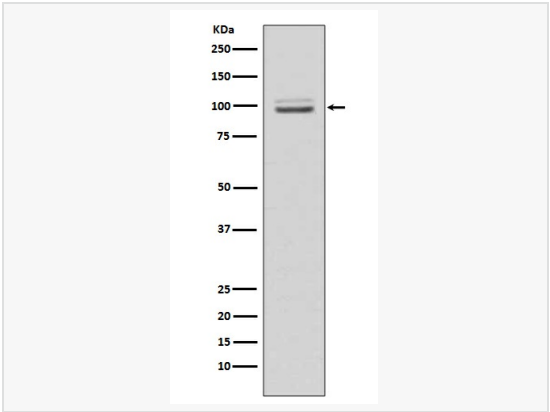
Catalog # P010882

Product Information

Application	WB, ICC/IF, ELISA
Reactivity	Human, Mouse, Rat
Dilution	WB 1:500~1:1,000; IF 1:50~1:200
Host	Rabbit
Clonality	Polyclonal
Isotype	IgG
Label	Unconjugated
Immunogen	A synthesized peptide derived from human MKLP1
Format	Buffer System: Rabbit IgG in phosphate buffered saline, pH 7.4, 150mM NaCl, 0.02% sodium azide and 50% glycerol. Purification: Affinity Chromatography
Storage	Shipped on wet ice. Store at 20°C. Stable for 24 months from date of receipt. Aliquoting is unnecessary for -20°C storage.
Precautions	Anti-MKLP1 antibody is for research use only and not for use in diagnostic or therapeutic procedures.

Protein Information

Synonyms	CHO1, KNSL5, MKLP1, MKLP-1.
Calculated MW	Calculated MW: 110 kDa; Observed MW: 98 kDa
Primary Accession	Q02241
Gene ID	9493
Background	Plus-end-directed motor enzyme that moves antiparallel microtubules in vitro. Localizes to the interzone of mitotic spindles.



Western blot analysis of MKLP1 in HeLa lysates using MKLP1 antibody.