

Anti-PRC1 Rabbit pAb

Purified Rabbit Polyclonal Antibody

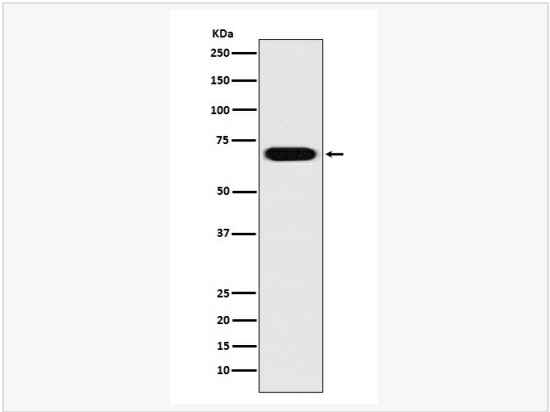
Catalog # P012832

Product Information

Application	WB, IHC-P, ICC/IF, IP, FC, ELISA
Reactivity	Human, Mouse, Rat
Dilution	WB 1:500~1:1,000; IHC-P 1:50~1:100; IF 1:50~1:200; IP 1:20; FC 1:50~1:100
Host	Rabbit
Clonality	Polyclonal
Isotype	IgG
Label	Unconjugated
Immunogen	A synthesized peptide derived from human PRC1
Format	Buffer System: Rabbit IgG in phosphate buffered saline, pH 7.4, 150mM NaCl, 0.02% sodium azide and 50% glycerol. Purification: Affinity Chromatography
Storage	Shipped on wet ice. Store at 20°C. Stable for 24 months from date of receipt. Aliquoting is unnecessary for -20°C storage.
Precautions	Anti-PRC1 antibody is for research use only and not for use in diagnostic or therapeutic procedures.

Protein Information

Synonyms	Protein regulator of cytokinesis 1.
Calculated MW	Calculated MW: 72 kDa; Observed MW: 72 kDa
Primary Accession	O43663
Gene ID	9055
Background	Cross-links antiparrallel microtubules at an average distance of 35 nM. Essential for controlling the spatiotemporal formation of the midzone and successful cytokinesis. Required for KIF14 localization to the central spindle and midbody.



Western blot analysis of PRC1 in HeLa lysates using PRC1 antibody.