

Anti-KIFC1 Rabbit pAb

Purified Rabbit Polyclonal Antibody

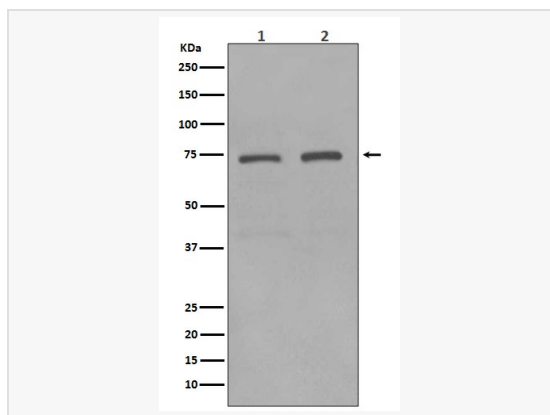
Catalog # P012523

Product Information

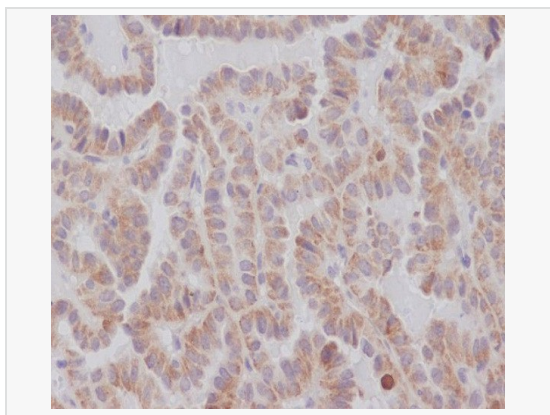
Application	WB, IHC-P, ICC/IF, IP, ELISA
Reactivity	Human
Dilution	WB 1:500~1:1,000; IHC-P 1:50~1:100; IF 1:50~1:200; IP 1:20
Host	Rabbit
Clonality	Polyclonal
Isotype	IgG
Label	Unconjugated
Immunogen	A synthesized peptide derived from human KIFC1
Format	Buffer System: Rabbit IgG in phosphate buffered saline, pH 7.4, 150mM NaCl, 0.02% sodium azide and 50% glycerol. Purification: Affinity Chromatography
Storage	Shipped on wet ice. Store at 20°C. Stable for 24 months from date of receipt. Aliquoting is unnecessary for -20°C storage.
Precautions	Anti-KIFC1 antibody is for research use only and not for use in diagnostic or therapeutic procedures.

Protein Information

Synonyms	HSET, KNSL2.
Calculated MW	Calculated MW: 74 kDa; Observed MW: 74 kDa
Primary Accession	Q9BW19
Gene ID	3833
Background	Minus end-directed microtubule-dependent motor required for bipolar spindle formation. May contribute to movement of early endocytic vesicles.



Western blot analysis of KIFC1 in (1) HeLa lysates; (2) HepG2 lysates using KIFC1 antibody.



Immunohistochemistry analysis of paraffin-embedded Human thyroid carcinoma using KIFC1 antibody. High-pressure and temperature Sodium Citrate pH 6.0 was used for antigen retrieval.