

Anti-Caveolin 2 Rabbit pAb

Purified Rabbit Polyclonal Antibody

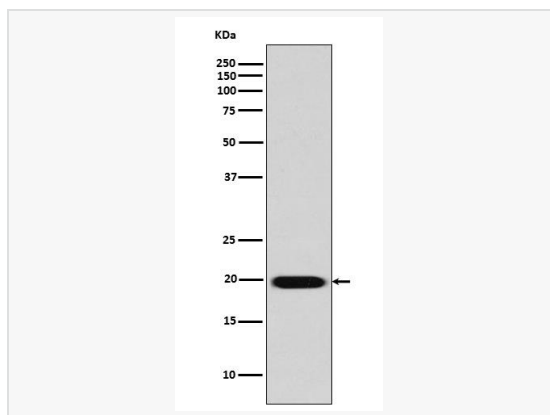
Catalog # P011561

Product Information

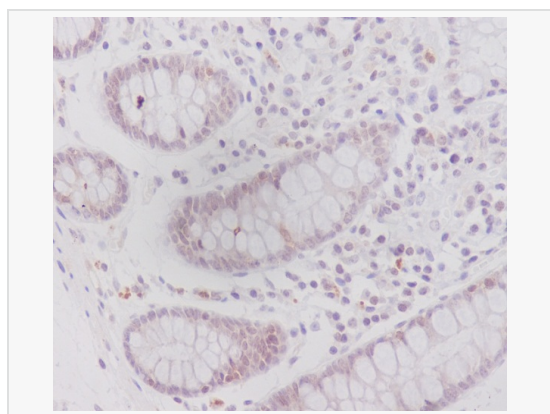
Application	WB, IHC-P, ICC/IF, IP, ELISA
Reactivity	Human
Dilution	WB 1:500~1:1,000; IHC-P 1:50~1:100; IF 1:50~1:200; IP 1:20
Host	Rabbit
Clonality	Polyclonal
Isotype	IgG
Label	Unconjugated
Immunogen	A synthesized peptide derived from human Caveolin-2
Format	Buffer System: Rabbit IgG in phosphate buffered saline, pH 7.4, 150mM NaCl, 0.02% sodium azide and 50% glycerol. Purification: Affinity Chromatography
Storage	Shipped on wet ice. Store at 20°C. Stable for 24 months from date of receipt. Aliquoting is unnecessary for -20°C storage.
Precautions	Anti-Caveolin 2 antibody is for research use only and not for use in diagnostic or therapeutic procedures.

Protein Information

Synonyms	CAV2, Caveolae protein 20 Kd, Caveolin 2, Caveolin 2 isoform a and b, Caveolin-2.
Calculated MW	Calculated MW: 18 kDa; Observed MW: 18 kDa
Primary Accession	P51636
Gene ID	858
Background	May act as a scaffolding protein within caveolar membranes. Interacts directly with G-protein alpha subunits and can functionally regulate their activity. Acts as an accessory protein in conjunction with CAV1 in targeting to lipid rafts and driving caveolae formation.



Western blot analysis of Caveolin 2 in HeLa lysates using Caveolin 2 antibody.



Immunohistochemistry analysis of paraffin-embedded Human colon using Caveolin2 antibody. High-pressure and temperature Sodium Citrate pH 6.0 was used for antigen retrieval.