

Anti-Rad51 Rabbit pAb

Purified Rabbit Polyclonal Antibody

Catalog # P011841

Product Information

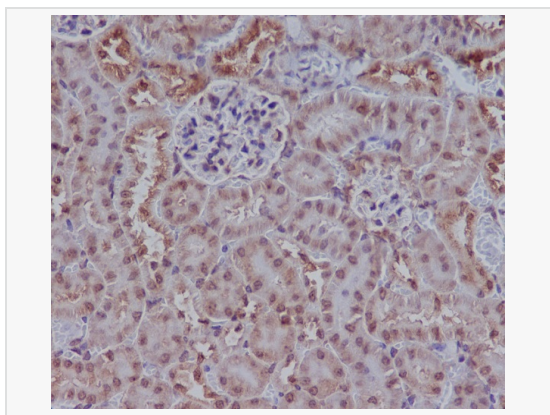
Application	WB, IHC-P, ICC/IF, IP, FC, ELISA
Reactivity	Human, Mouse, Rat
Dilution	WB 1:500~1:1,000; IHC-P 1:50~1:100; IF 1:50~1:200; IP 1:20; FC 1:50~1:100
Host	Rabbit
Clonality	Polyclonal
Isotype	IgG
Label	Unconjugated
Immunogen	A synthesized peptide derived from human Rad51
Format	Buffer System: Rabbit IgG in phosphate buffered saline, pH 7.4, 150mM NaCl, 0.02% sodium azide and 50% glycerol. Purification: Affinity Chromatography
Storage	Shipped on wet ice. Store at 20°C. Stable for 24 months from date of receipt. Aliquoting is unnecessary for -20°C storage.
Precautions	Anti-Rad51 antibody is for research use only and not for use in diagnostic or therapeutic procedures.

Protein Information

Synonyms	RAD51, RAD51A, RECA, DNA repair protein RAD51 homolog 1, HsRAD51, hRAD51, RAD51 homolog A.
Calculated MW	Calculated MW: 37 kDa; Observed MW: 37 kDa
Primary Accession	Q06609
Gene ID	5888
Background	Rad51 participates in a common DNA damage response pathway associated with the activation of homologous recombination and double-strand break repair. Binds to single and double-stranded DNA and exhibits DNA-dependent ATPase activity. Underwinds duplex DNA and forms helical nucleoprotein filaments.



Western blot analysis of Rad51 in (1) HEK293 lysates; (2) K562 lysates using Rad51 antibody.



Immunohistochemistry analysis of paraffin-embedded mouse kidney using Rad51 antibody. High-pressure and temperature Sodium Citrate pH 6.0 was used for antigen retrieval.