

Anti-ARFRP1 Rabbit mAb

Purified Recombinant Rabbit Monoclonal Antibody

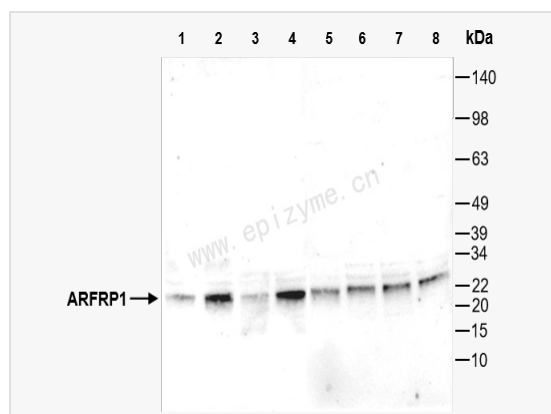
Catalog # R011032

Product Information

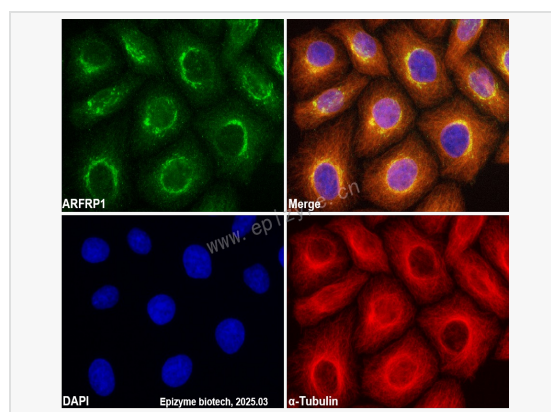
Application	WB, IHC-P, IF (Cell)/ICC, IF (Tissue-P), ELISA
Reactivity	Human, Mouse, Rat
Dilution	WB 1:1,000~1:3,000; IHC-P 1:100~1:200; IF 1:50~1:100
Host	Rabbit
Clonality	Monoclonal
Clone No.	20K97M64
Isotype	IgG
Label	Unconjugated
Immunogen	A synthesized peptide derived from human ARFRP1
Format	Affinity purified monoclonal antibody supplied in PBS with 0.01% sodium azide and 50% glycerol, pH 7.3.
Storage	Shipped on wet ice. Store at 20°C. Stable for 24 months from date of receipt. Aliquoting is unnecessary for -20°C storage.
Precautions	Anti-ARFRP1 Rabbit mAb [20K97M64] is for research use only and not for use in diagnostic or therapeutic procedures.

Protein Information

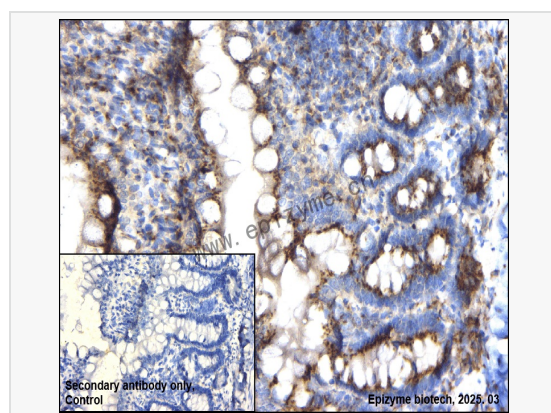
Synonyms	ADP ribosylation factor related protein 1, ADP-ribosylation factor-related protein 1, ARF related protein 1, ARF related protein, ARF-related protein 1, ARFRP_HUMAN, ARFRP1, ARL 18, ARL18, ARP 1, ARP, ARP1, Helicase like protein NHL, MGC6837, SCG10 like protein.
Calculated MW	Calculated MW: 23 kDa; Observed MW: 23 kDa
Primary Accession	Q13795
Gene ID	10139
Background	The protein encoded by this gene is a membrane-associated GTP-ase which localizes to the plasma membrane and is related to the ADP-ribosylation factor (ARF) and ARF-like (ARL) proteins. This gene plays a role in membrane trafficking between the trans-Golgi network and endosomes. Alternatively spliced transcript variants encoding different isoforms have been identified. [provided by RefSeq, May 2012]
Cellular Location	Golgi apparatus.
Tissue Location	Found in most tissues.



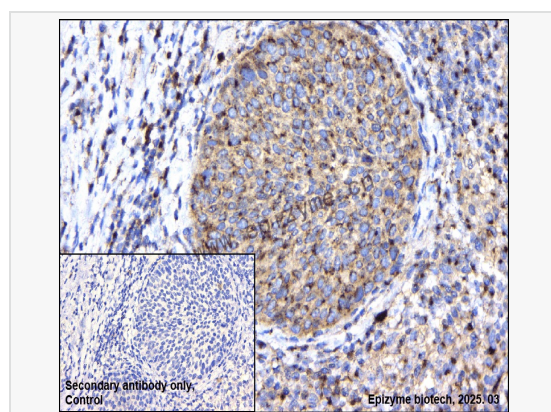
Western Blot - Anti-ARFRP1 Rabbit mAb [20K97M64] All lanes: R011032 at 1:3,000 dilution Lane 1: HeLa (Human cervix adenocarcinoma epithelial cell) whole cell lysates Lane 2: HepG2 (Human hepatocarcinoma epithelial cell) whole cell lysates Lane 3: HCT116 (Human colorectal carcinoma epithelial cell) whole cell lysates Lane 4: SW620 (Human colorectal carcinoma epithelial cell) whole cell lysates Lane 5: SCC-9 (Human tongue squamous carcinoma epithelial cell) whole cell lysates Lane 6: C2C12 (Mouse myoblasts epithelial cell) whole cell lysates Lane 7: Raw264.7 (Mouse mononuclear macrophage leukemia cell) whole cell lysates Lane 8: PC-12 (Rat adrenal pheochromocytoma epithelial cell) whole cell lysates Lysates/proteins at 10 µg per lane. Secondary antibody: Goat Anti-Rabbit IgG (H+L), HRP Conjugated (Cat. No. LF102) at 1:5,000 dilution Predicted band size: 23 kDa Observed band size: 23 kDa Developed using the ECL technique (Cat. No. SQ201).



Immunofluorescence - Anti-ARFRP1 Rabbit mAb [20K97M64] Sample: HeLa cells The cells were fixed with 4% paraformaldehyde (10 min), permeabilized with 0.1% Triton X-100 for 5 minutes and then blocked with 5% BSA in 0.1% PBS-Tween for 0.5 hours. Primary antibodies: R011032 at 1:100 dilution and α-tubulin Mouse Monoclonal Antibody (Cat. No. LF209) at 1:100 dilution Secondary antibodies: Goat anti-Rabbit (488) at 1:1,000 dilution (shown in green) and Goat anti-Mouse (555) at 1:1,000 dilution (shown in red) Nuclei were stained with DAPI (shown in blue).



Immunohistochemistry - Anti-ARFRP1 Rabbit mAb [20K97M64] Sample: Paraformaldehyde-fixed, paraffin embedded rat colon tissue Heat mediated antigen retrieval with Tris-EDTA buffer (pH 9.0) for 30 mins. Primary antibody: R011032 at 1:200 dilution Secondary antibody: Goat Anti-Rabbit IgG (H+L), HRP conjugated at 1:1,000 dilution DAB was used as the chromogen. Counter stained with hematoxylin. Positive/negative staining were presented. Only the secondary antibody was used as the negative control.



Immunohistochemistry - Anti-ARFRP1 Rabbit mAb [20K97M64] Sample: Paraformaldehyde-fixed, paraffin embedded human cervical cancer tissue Heat mediated antigen retrieval with Tris-EDTA buffer (pH 9.0) for 30 mins. Primary antibody: R011032 at 1:200 dilution Secondary antibody: Goat Anti-Rabbit IgG (H+L), HRP conjugated at 1:1,000 dilution DAB was used as the chromogen. Counter stained with hematoxylin. Positive/negative staining were presented. Only the secondary antibody was used as the negative control.